

One Storehouse Row

Welcome to Storehouse Row

Here's an opportunity to place your firm at the center of the most revolutionary urban redevelopment project in the nation's history. Noisette is transforming North Charleston's old naval base and surrounding neighborhoods into a spirited community of forward-looking businesspeople, retailers, artisans, residents, and visitors.

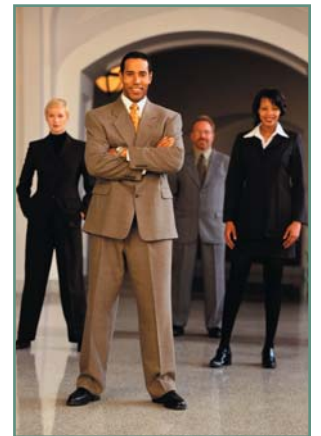
At the hub of the Noisette redevelopment of the old naval base is Storehouse Row, a commercial aggregate of visionary firms that embrace the values and promise of sustainable urban life. As Number Seven and other buildings in this complex are readied for leasing, the streetscape on "The Row" will evolve into a lively complex of offices, shops, studios, open-air markets, and entrepreneurial businesses.



Visionary Opportunity

The modern brick office structure at One Storehouse Row was the last building completed at the Charleston naval complex before base operations ceased in 1995. For nearly a century, the site had been occupied by narrow storage buildings containing materials used for construction and maintenance of hundreds of Navy warships ranging from cruisers to submarines. The present structure was designed to serve as the Navy's regional public works office. Since much of the planning was finished when the base closure announcement was made, construction proceeded even though no Navy functions were ever housed inside.

Today, Number One Storehouse Row houses local offices for the South Carolina Department of Health and Environmental Control, including the Office of Coastal and Resource Management. The building is the southern-most structure in Storehouse Row, the emerging commercial/office center of Noisette, the country's largest sustainable urban redevelopment project.



People Friendly

Renovation guidelines ensure the space will be the healthiest, most productive environment possible. From specification of recyclable materials to the use of safe, low-VOC cleaning compounds, every aspect of construction and maintenance is designed to promote environmental sustainability within a productive, people-friendly atmosphere.

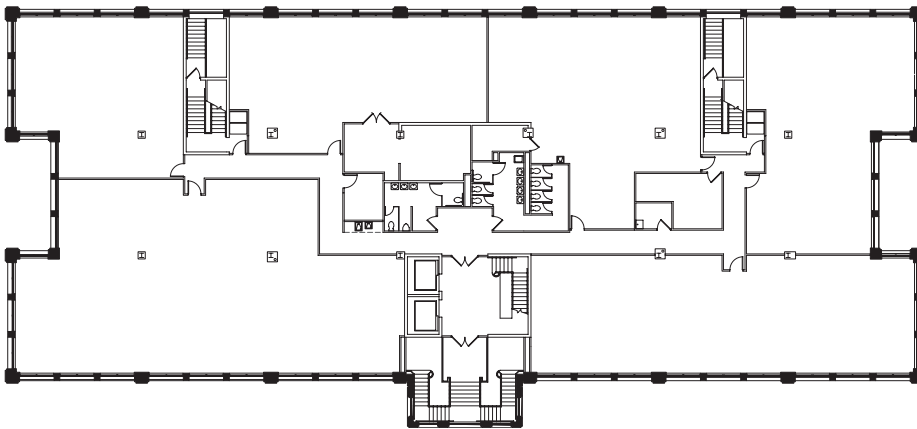


One Storehouse Row

MLS 2314741 - CML - OFF

Available An impressive corner location with ample covered parking on ground floor, and additional parking in surrounding lots. Twin elevators in the remodeled foyer help make this building fully ADA accessible. Easy access from downtown Charleston, East Cooper, the international airport, and West Ashley. The available second floor includes 14,826 square feet which can be leased in increments of 1,000 s.f. and up.

Directions Follow McMillan Ave. to Noisette Blvd., and the building lies on your left. Or follow Virginia Avenue. south to Noisette Blvd., continue south to McMillan Avenue., and the building is on the corner.



For more information or an appointment, call John Tison
Palmetto Commercial Properties
Phone: (843) 577-2550 or E-mail: johnt@btitelecom.net